

Supplementary Materials for

Ethyl Acetate Extract of Licorice Root (*Glycyrrhiza glabra*) Enhances Proliferation and Osteogenic Differentiation of Human Bone Marrow Mesenchymal Stem Cells

Arezou Azizsoltani, Khosro Piri*, Sahar Behzad, Masoud Soleimani,
Mina Nekouei, Zahra Mahmoudi and Asad Kazemi

*To whom correspondence should be addressed. E-mail: kh_piri@basu.ac.ir

Volume 17, Issue 3 (Summer 2018)

This PDF file includes:

Figure S1 and Table S1

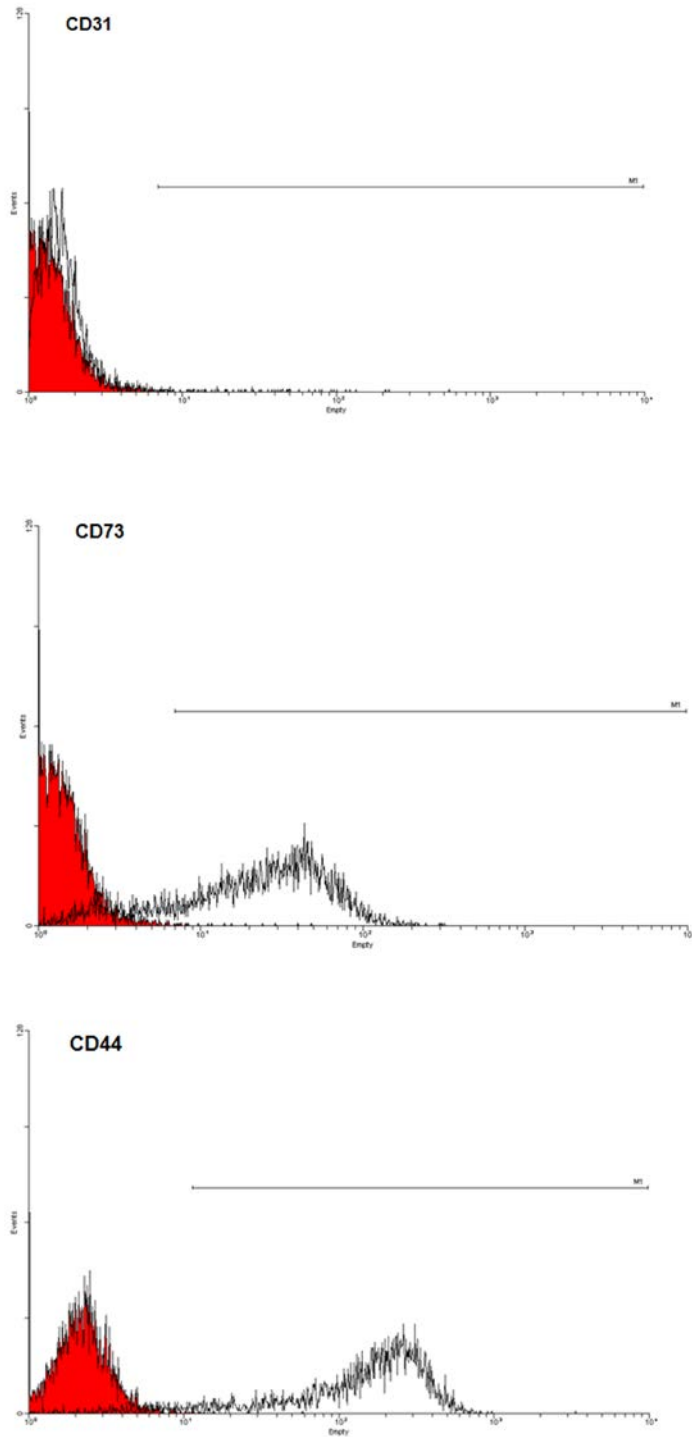


Figure S1. Flow cytometry analysis showed that MSCs passage 2 cells were positive for CD44, CD73 and were negative for CD31 which confirmed their non-hematopoietic origin Histogram analyses of cell surface markers of MSCs. The respective isotype control is shown as red.

Table S1. Primers used in real time RT-PCR.

Gene	Primer sequence	Length product (bp)
BMP-2	F:TGCGGTCTCCTAAAGGTC R:AACTCGAACTCGCTCAGG	186
Osteocalcin	F:GGAAAGGTGCAGCCTTTGTG R:GGCTCCAGCCATTGATACAG	80
ALP	F:GCACCTGCCTTACTAACTC R:AGACACCCATCCCATCTC	162
Runx2	F:GCCTTCAAGGTGGTAGCCC R:CGTTACCCGCCATGACAGTA	67
GAPDH	F:CTCTCTGCTCCTCCTGTTCG R:ACGACCAAATCCGTTGACTC	114