

## Antioxidant and Cytotoxic Activities and Phytochemical Analysis of *Euphorbia wallichii* Root Extract and its Fractions

Ihsan-Ul-Haq<sup>a</sup>, Nazif Ullah<sup>a</sup>, Gulnaz Bibi<sup>a</sup>, Simab Kanwal<sup>a</sup>,  
Muhammad Sheeraz Ahmad<sup>b</sup> and Bushra Mirza<sup>a\*</sup>

<sup>a</sup>Department of Biochemistry, Faculty of Biological Sciences, Quaid-i-Azam University (45320), Islamabad, Pakistan. <sup>b</sup>Department of Biochemistry, PMAS-Arid Agriculture University Rawalpindi, Rawalpindi Pakistan.

### Abstract

*Euphorbia wallichii* a perennial herb growing mainly in Himalayas has been widely used in folk medicines for its medicinal properties. In the present study, the crude methanolic root extract (CME) and its fractions; n-Hexane Fraction (NHF), n-Butanol Fraction (NBF), Chloroform Fraction (CHF), Ethyl acetate Fraction (EAF) and Aqueous Fraction (AQF) of this plant specie were investigated for antioxidant and cytotoxic activities and phytochemical analysis. Antioxidant activity was determined by using 2,2-diphenyl-1-picryl-hydrazyl free radical (DPPH) and DNA protection assay performed on pBR322 plasmid DNA. In both these assays, promising results were obtained for CME as well as other fractions. The IC<sub>50</sub> values for DPPH assay were in a range of 7.89 to 63.35 µg/ml in which EAF showed the best antioxidant potential and almost all the tested samples showed certain level of DNA protection. The cytotoxic activity was assessed by using Sulforhodamine B (SRB) assay on human cell lines; H157 (Lung Carcinoma) and HT144 (Malignant Melanoma). The IC<sub>50</sub> values of the tested samples ranged from 0.18 to 1.4 mg/mL against H157 cell line whereas against HT144 cell line the IC<sub>50</sub> values ranged from 0.46 to 17.88 mg/mL with NBF fraction showing maximum potential for both. Furthermore, the phytochemical analysis of CME and its fractions showed the presences of flavonoids, saponins, tannins, terpenoides and cardiac glycosides with varying concentrations.

**Keywords:** Antioxidant; Cytotoxicity; DNA protection; *E. wallichii*; Phytochemical analysis.

### Introduction

The Euphorbiaceae Family is one of the largest families of higher plants, about 300 genera and 7,500 species have been reported (1, 2). There are about 2,160 species in genus *Euphorbia* and it is regarded as the 6<sup>th</sup> largest genus among flowering plants. Many plants

of this genus have been used in folk medicine for centuries against various diseases including infections, skin diseases as well as cancer (1-5).

*E. wallichii* is a perennial herb growing mainly in the Himalayas, including Qinghai-Tibetan Plateau area of China, India, Nepal, and Kashmir. The roots of this plant have been conventionally used in folk medicine for treatment of edema, skin disease, cutaneous anthrax and exanthema (6, 7). A chemical literature survey of *E. wallichii*, showed the presence of abietane (8), diterpenoids

\* Corresponding author:

E-mail: bushramirza@qau.edu.pk

(6, 7) and triterpenoid of the multiflorane class (1). Recently Ali *et al.* (2) reported significant results for *in vitro* phytotoxicity, cytotoxicity and antibacterial activity of *E. wallichii* root extract and fractions. Plants of the genus *Euphorbia* are known to possess considerable anti-cancer (7), anti-tumor and antioxidant (7, 9) potential. However antioxidant and cytotoxic activity (towards cancer cells) of *E. wallichii* in comparison to its phytochemicals have not been reported previously. This provoked us to investigate *E. wallichii* for its cytotoxic and antioxidant activity along with phytochemical studies.

## Experimental

### *Plant material*

The roots of *E. wallichii* were collected from Mushkpuri tract, Nathia Gali, N.W.F.P. Pakistan in July 2008. The plant was identified by taxonomist Dr Rizwana Aleem Qureshi, Associate Professor, Department of Plant Sciences, Quaid-i-Azam University, Islamabad, Pakistan with reference to "Flora of Pakistan" and comparing with already identified herbarium sheets preserved in the herbarium. A voucher specimen (Specimen No. 125755) was deposited in ISL Herbarium, Quaid-i-Azam University, Islamabad Pakistan.

### *Extraction and fractionation*

Fresh roots of the *E. wallichii* were washed, sliced and dried under shade and ground. The root extract was prepared in analytical grade methanol (5 kg in 12 L) for 72 h, then methanol was removed and residue was immersed in methanol for further five days. Thereafter, the methanol was decanted and filtered with filter paper. The filtrate was subsequently concentrated under reduced pressure at 45°C in rotary evaporator (Rotavapor R-200 Buchi, Switzerland) and dried to a constant weight (700 gram) in vacuum oven at 45°C (Vacucell, Einrichtungen GmbH). This was called crude methanolic root extract (CME).

The CME was then subjected to fractionation, where 230 g of CME was suspended in 200 mL of distilled water. This aqueous suspension was further subjected to solvent-solvent extraction for five fractions, namely; *n*-Hexane Fraction

(NHF), *n*-Butanol Fraction (NBF), Chloroform Fraction (CHF), Ethyl acetate Fraction (EAF) and aqueous Fraction (AQF). The overall fractionation procedure is given in flowchart diagram (Figure 4).

### *Biological activities*

#### *Determination of antioxidant activity*

The free radical scavenging activity was measured by using 2,2-diphenyl-1-picrylhydrazyl free radical (DPPH) assay. DPPH assay was performed according to the procedure described by Kulisic *et al.* (10) modified by Obeid *et al.* (11). DPPH solution was prepared by dissolving 3.2 mg DPPH in 100 mL of 82% methanol. 2800 µL of DPPH solution was added to glass vials followed by the addition of 200 µL of CME solution in Methanol; leading to the final concentration of 100 µg/mL, 50 µg/mL, 25 µg/mL, 10 µg/mL, 5 µg/mL, 2 µg/mL and 1 µg/mL. Mixtures were shaken well and kept in dark at controlled room temperature (25°C-28°C) for one hour. Absorbance was measured at 517 nm by using spectrophotometer (DAD 8453, Agilent). Methanol (82%) was used as blank while mixture of 200 µL of methanol and 2800 µL of DPPH solutions were taken as negative control. Ascorbic acid was used as positive control. Each test was performed in triplicates and percentage inhibition was measured according to formula given below and IC<sub>50</sub> values were calculated by graphical method.

$$\text{Scavenging effect (\%)} = [(Ac-As)/Ac] \times 100$$

Where "Ac" means Absorbance of negative control and "As" means Absorbance of test sample. In order to determine the antioxidant activity of different fractions the same procedure was then repeated with all of the fractions *i.e.* NBF, NHF, EAF and AQF.

#### *DNA protection assay*

To study the effects of CME and its fractions on plasmid DNA the procedure of Tian and Hua (12), modified by Nawaz *et al.* (13) was adopted. The reaction was conducted in an Eppendorf tube at a total volume of 15 µL containing following components; 0.5 µg pBR322 DNA suspended in 3 µL of 50mM phosphate buffer (pH 7.4), 3 µL of 2 mM FeSO<sub>4</sub>, 5 µL of tested samples (CME and its fractions) and 4 µL of

30% H<sub>2</sub>O<sub>2</sub>. Resulting mixture was incubated at 37°C for 1 h and was subjected to 1% agarose gel electrophoresis for 1 h at 100 volts. DNA bands (supercoiled, linear, and open circular) were stained with ethidium bromide and were qualitatively analyzed by scanning with Doc-IT computer program (VWR). Evaluations of antioxidant or prooxidant effects on DNA were based on the increase or loss percentage of supercoiled monomer, compared with the control value. To avoid the effects of photoexcitation of samples, experiments were done in the dark and untreated supercoiled DNA, supercoiled DNA treated with 2 mM FeSO<sub>4</sub>, supercoiled DNA treated with 30% H<sub>2</sub>O<sub>2</sub> and supercoiled DNA treated with 2 mM FeSO<sub>4</sub> + 30% H<sub>2</sub>O<sub>2</sub> were used as control along with the test samples.

#### *Cytotoxic activity by sulforhodamine B (SRB) assay*

The human cancer cell lines H157 (lung carcinoma) and HT144 (malignant melanoma) were cultured in RPMI1640 media (Gibco BRL, Life Technologies, Inc) supplemented with 10% heat inactivated fetal bovine serum in a humidified incubator at 37°C with 5% CO<sub>2</sub>. The cells were subcultured approximately once every four days by 98% trypsin EDTA solution (pH 7.2). Growth inhibition of H157 and HT144 cells was determined by using the modified SRB assay as described by Skehan *et al.* (14). Briefly, cells were seeded at a density of 5×10<sup>3</sup> cells/well in 96-well plates. After 24 h, serial dilutions of samples (CME and fractions) and standard drug (Methotrexate) solutions were added for each concentration. The cells were exposed to test samples and drugs for continuous 72 h. For cell fixation, the culture medium was removed and trichloroacetic acid (50%, 100 µL) was added in each plate. Then the plates were air-dried and 0.4% SRB (sigma) in 1% acetic acid was added for 30 min and unbound dye was washed out with 1% acetic acid. After air-drying, SRB dye within cells were dissolved with 100 µL solution of tris-base 10mM (pH 10.5). The optical density of the extracted SRB dye was measured with a microplate reader (Platos R 496) at 490nm. The 50% inhibitory concentration (IC<sub>50</sub>) of the test drugs was calculated using a Probit analysis program. Chemosensitivity of H157 and

HT144 cells transfected with control vector was determined by SRB assay as described above.

#### *Phytochemical analysis*

The crude methanol extract and its fractions were screened phytochemically for the presence of tannins, alkaloids, saponins, flavonoids, steriods phlobatannins, terpenoids and cardiac glycosides by standard methods of phytochemical analysis (15-19). For total flavonoid determination ammonium chloride chlorimetric method was used (20). The total phenolic contents were determined according to Velioglu *et al.* (21) method and Folin-Ciocalteu reagent was used.

## **Results and Discussion**

#### *Biological activities*

##### *Antioxidant activity*

DPPH free radical scavenging assay was used to evaluate antioxidant potential of our samples. The DPPH scavenging assay is a reliable and easy method for antioxidant property evaluation. This assay has been used for investigating antioxidant properties of wheat, vegetables, herbs, edible seed oils, conjugated linoleic acids, and flours in several different organic solvent systems including ethanol, aqueous acetone, methanol, aqueous alcohol, and benzene (9, 22-25).

CME as well as fractions showed effective free radical scavenging activity as determined by DPPH assay. The results of free radical scavenging assay are given in Table 1. Crude extract showed promising antioxidant activity with IC<sub>50</sub> value of 8.41 µg/mL while EAF has maximum antioxidant activity with IC<sub>50</sub> value of 7.89 µg/mL. Other fractions; NBF, AQF and CHF have IC<sub>50</sub> values of 13.55, 15.23 and 63.35 µg/mL respectively, while NHF showed lowest free radical scavenging activity and has IC<sub>50</sub> >100 µg/mL. EAF has excellent free radical scavenging with IC<sub>50</sub> 7.89 µg/mL which is comparable to ascorbic acid, a very important antioxidant compound (26). Phytochemical assay of the EAF shows that it has high concentrations of tannins which are known to be potent antioxidants (27). The presence of tannins in EAF may be responsible for its antioxidant activity. Our phytochemical analyses (Table 3) also support

**Table 1.** Percentage scavenging and IC<sub>50</sub> of antioxidant assay for CME and Fractions of *E. wallichii* root.

S. No.	Extract	Scavenging effect (%) at different concentrations ± STDEV *							IC <sub>50</sub> µg/mL
		100 µg/mL	50 µg/mL	25 µg/mL	10 µg/mL	5 µg/mL	2 µg/mL	1 µg/mL	
1.	CME	92.6 ± 0.23	93.0 ± 0.23	93.0 ± 0.32	53.0 ± 0.21	44.0 ± 0.00	18.0 ± 0.32	6.0 ± 0.56	8.410
2.	NHF	12.2 ± 0.13	-	-	-	-	-	-	>100
3.	NBF	93.1 ± 0.60	93.2 ± 0.72	93.0 ± 0.52	37.0 ± 0.23	34.2 ± 0.34	3.1 ± 0.02	-	13.55
4.	CHF	90.2 ± 0.72	31.1 ± 0.42	9.1 ± 0.35	-	-	-	-	63.35
5.	EAF	92.7 ± 0.56	93.7 ± 0.45	91.3 ± 0.35	54.1 ± 0.34	48.0 ± 0.25	29.1 ± 0.21	5.0 ± 0.13	7.89
6.	AQF	91.0 ± 0.32	90.2 ± 0.26	90.1 ± 0.76	29.0 ± 0.59	5.8 ± 0.32	-	-	15.23
7.	A.A.	95.0 ± 0.53	94.8 ± 0.61	90.0 ± 0.48	66.4 ± 1.2	44.7 ± 0.23	30.0 ± 0.41	11.7 ± 0.71	5.63

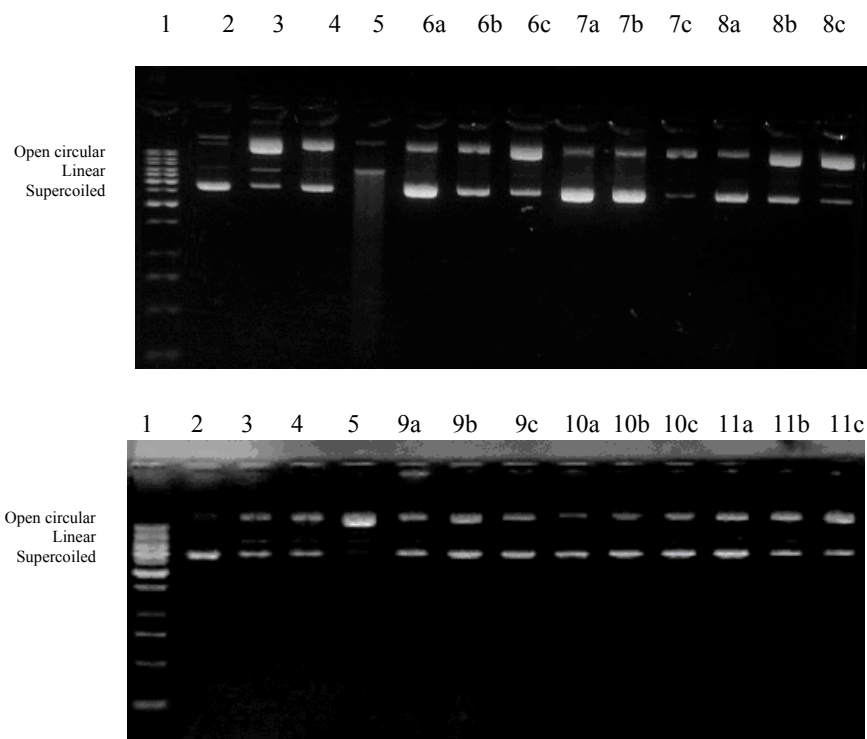
\*Data represents mean values of three replicates, A.A.: Ascorbic acid, - : shows no activity.

this hypothesis as antioxidant activity varies with the change in tannins concentration.

Transition metal iron, in human, may react with H<sub>2</sub>O<sub>2</sub> to produce •OH through a Fenton like reaction. The •OH is the most influential oxidizing agent among other reactive oxygen radicals, and it can oxidize biomolecules` including DNA, protein, lipid, and carbohydrate (27,28,29).

Oxidative DNA damage from reactive oxygen species (ROS) can play a serious role in many biological processes including mutagenesis, aging and carcinogenesis (31-33).

Results of DNA protection assay demonstrated that CME has concentration dependent DNA protection properties (Figure 1). Among other fractions NHF has good DNA protection activity



**Figure 1.** DNA protection affect of crude extract and different fractions of *E. wallichii* roots. 1 = 1Kb DNA Ladder, 2 = Plasmid DNA (pBR 322), 3 = Plasmid DNA treated with FeSO<sub>4</sub>, 4 = Plasmid DNA treated with H<sub>2</sub>O<sub>2</sub>, 5 = Plasmid DNA treated with FeSO<sub>4</sub> and H<sub>2</sub>O<sub>2</sub>, a = 1000 µg/mL, b = 100 µg/mL, c = 10 µg/mL, 6 = CME, 7 = NHF, 8 = NBF, 9 = CHF, 10 = EAF, 11 = AQF in which a,b,c shows three replicates for each test sample.

**Table 2.** Cytotoxic activity of CME and Fractions of *E. wallichii* root \*.

Extract Name	Treatment (mg/mL) against H157 cell line					IC <sub>50</sub> mg/mL	Treatment (mg/mL) against HT144 cell line					IC <sub>50</sub> mg/mL
	0.1	0.5	1	2.5	5		0.1	0.5	1	2.5	5	
CME	38 ± 0.9	56 ± 1.0	64 ± 0.6	73 ± 0.7	75 ± 0.8	0.29	20 ± 0.8	45 ± 1.1	58 ± 1.1	63 ± 1.2	67 ± 1.1	0.87
NHF	38 ± 0.7	51 ± 1.0	54 ± 1.1	54 ± 0.6	58 ± 0.9	0.74	11 ± 0.9	15 ± 0.8	30 ± 0.9	38 ± 0.9	38 ± 0.9	17.88
NBF	41 ± 0.9	61 ± 2.0	73 ± 0.7	75 ± 0.9	76 ± 0.9	0.18	28 ± 1.0	54 ± 0.9	66 ± 1.1	68 ± 1.3	74 ± 0.8	0.46
CHF	29 ± 0.7	33 ± 2.1	49 ± 1.1	55 ± 1.1	65 ± 1.1	1.36	7 ± 1.1	28 ± 1.1	48 ± 1.3	60 ± 1.1	61 ± 1.1	1.69
EAF	42 ± 1.1	57 ± 1.0	67 ± 1.2	76 ± 1.1	78 ± 1.1	0.22	37 ± 1.1	43 ± 1.1	57 ± 1.2	64 ± 1.1	75 ± 1.1	0.54
AQF	22 ± 0.7	34 ± 0.8	44 ± 1.1	57 ± 0.7	66 ± 0.9	1.4	7 ± 0.9	17 ± 0.9	27 ± 0.9	33 ± 0.9	45 ± 0.9	11.7
Methotrexate	81 ± 0.9	92 ± 1.1	97 ± 1.1	98 ± 0.3	98 ± 0.7	5.9E-5	61 ± 0.9	67 ± 1.1	69 ± 0.9	74 ± 1.3	85 ± 1.2	0.02

\*a) Activity given as % inhibition of cancer cells. b) H157 (lung carcinoma cells) and HT144 (malignant melanoma cells). c) IC<sub>50</sub> was calculated by graphical method using MS-Excel 2007.

at 1000 µL/mL and 100 µL/mL while weak protection activity at 10 µL/mL. NBF also has good protection activity at 1000 µL/mL while moderate to weak protection activity at 100 µL/mL and 10 µL/mL respectively. CHF and EAF have good protection activity at all tested concentrations, while AQF has concentration dependent DNA protection activity as shown in the Figure 1.

### Cytotoxic activity

Infectious diseases and cancer have a primary position in use of medicinal plants for drug discovery and 60-75% anticancer and anti-infectious drugs have origin from natural products (34). The connotation in discovery of natural drugs for cancer chemoprevention is rapidly increasing (35-37). Several plant species rich in phenolics and flavonoids are reported for

**Table 3.** Phytochemical analysis of CME and Fractions of *E. wallichii*.

S/No	Constituents/ test	Extracts / Fractions					
		CME	NHF	NBF	CHF	EAF	AQF
	Alkaloids						
1	Dragendoff's	+	-	-	-	-	-
	Mayer's	+	-	-	-	-	-
	Wagners	+	-	-	-	-	-
	Flavonoids						
2	Harborne	++	+	++	+	++	+
	Steroids						
3	Liebermann-Burchard reaction	-	-	-	-	-	-
	Saponins						
4	Frothing Test	+	-	++	+	++	+++
	Tannins						
5	FeCl <sub>3</sub> Test	+++	-	+++	-	+++	+++
	Phlobatannins	-	-	-	-	-	-
7	Terpenoids	+++	+++	-	++	-	-
	Cardiac Glycosides						
8	Keller-Kiliani Test	+++	+++	-	++	-	-

+ : weekly present, ++: moderately present, +++: highly present, - : not present.

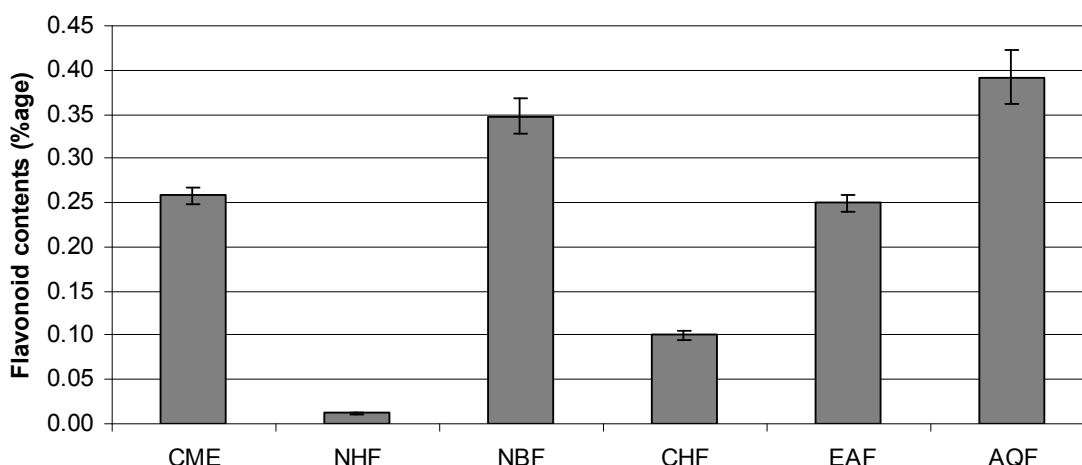


Figure 2. Flavonoid contents (% w/w dry extract/fraction) of *E. wallichii* CME and its fractions with standard deviations.

anticancer therapeutic properties. For cytotoxic activity, the SRB assay was conducted on CME of *E. wallichii* and its fractions by using human cell lines H157 (Lung Carcinoma) and HT144 (Malignant Melanoma). NBF shows the highest cytotoxicity on H157 cell line and has  $IC_{50}$  value 0.18 mg/mL followed by EAF at 0.22 mg/mL. The  $IC_{50}$  value of CME was 0.29 mg/mL against this cell line whereas standard drug Methotrexate has shown  $IC_{50}$  value 5.9E-5 mg/mL. Against Malignant Melanoma (HT144) cell line similar results were obtained. In this test the cytotoxic effect of NBF was highest with  $IC_{50}$  value of 0.46 mg/mL followed by EAF fraction having  $IC_{50}$  of 0.54 mg/mL and CME having  $IC_{50}$  value of 0.87 mg/mL. Standard drug Methotrexate has shown  $IC_{50}$  value 0.02 mg/mL for this cell line as shown in Table 2.

Cytotoxic activity recorded in the present study seems in accordance with our finding of phytochemicals in this plant species (Table 3). Since the phytochemical evaluation indicated the presence of flavonoids in CME and its fractions particularly in EAF, NBF and AQF which also shows promising cytotoxic potential. Among these active fractions NBF and EAF have highest cytotoxic and antioxidant potential. As mentioned earlier, these fractions have higher phenolic contents as well (Table 3).

The presence of tannins at high or moderate level in NBF, EAF and AQF and in CME may also be responsible for their promising

antioxidant/DNA protection and cytotoxic activity. Khan *et al* (38) reported that, "tannins exhibit a stronger anti-oxidant effect by their ability to quench hydroxyl radical and singlet oxygen mediated DNA cleavage". Therefore, the present work on antioxidant/DNA protection or cytotoxic activity and phytochemical analysis of *E. wallichii* can be a good start for isolation of valuable secondary metabolites from root extract of this plant.

#### Phytochemical analysis

Phytochemical analysis showed the presence of different classes and concentrations of compounds in CME and fractions (Table 3). Analysis shows the presence of flavonoids, saponins, tannins, terpenoids and cardiac glycosides whereas alkaloids were completely absent. On fractionation these compounds distributed in solvents of different polarities on the basis of solubility as shown in Table 3. Moderate to high concentrations of saponins, tannins and cardiac glycosides were present in CME and its fractions.

#### The flavonoid contents

The total flavonoid contents of the CME and its fractions were determined in terms of flavonoids percentage as shown in Figure 2. In CME the flavonoid contents were 0.26%. Among fractions, the highest flavonoid content were found in AQF (0.39%) followed by NBF

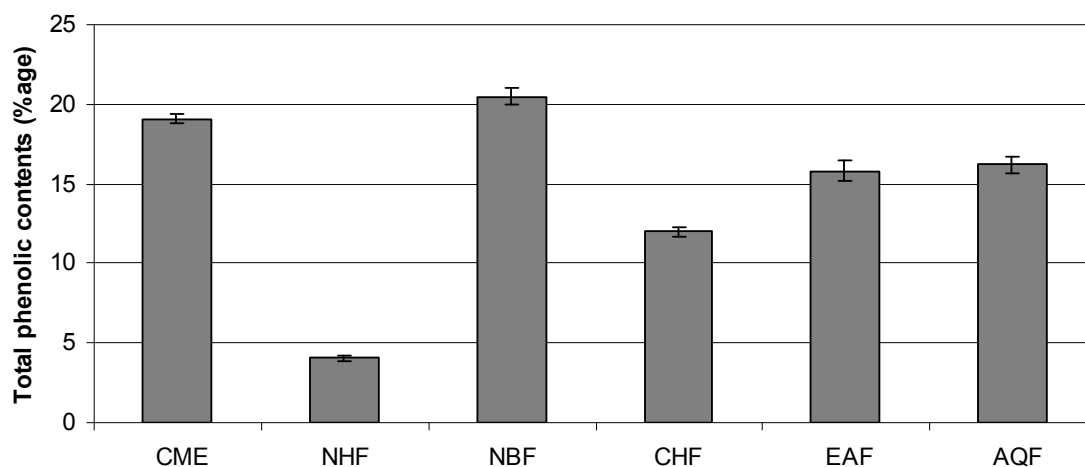


Figure 3. Total phenolic contents (% w/w of dry extract/fraction) of *E. wallichii* CME and its fractions with standard deviations.

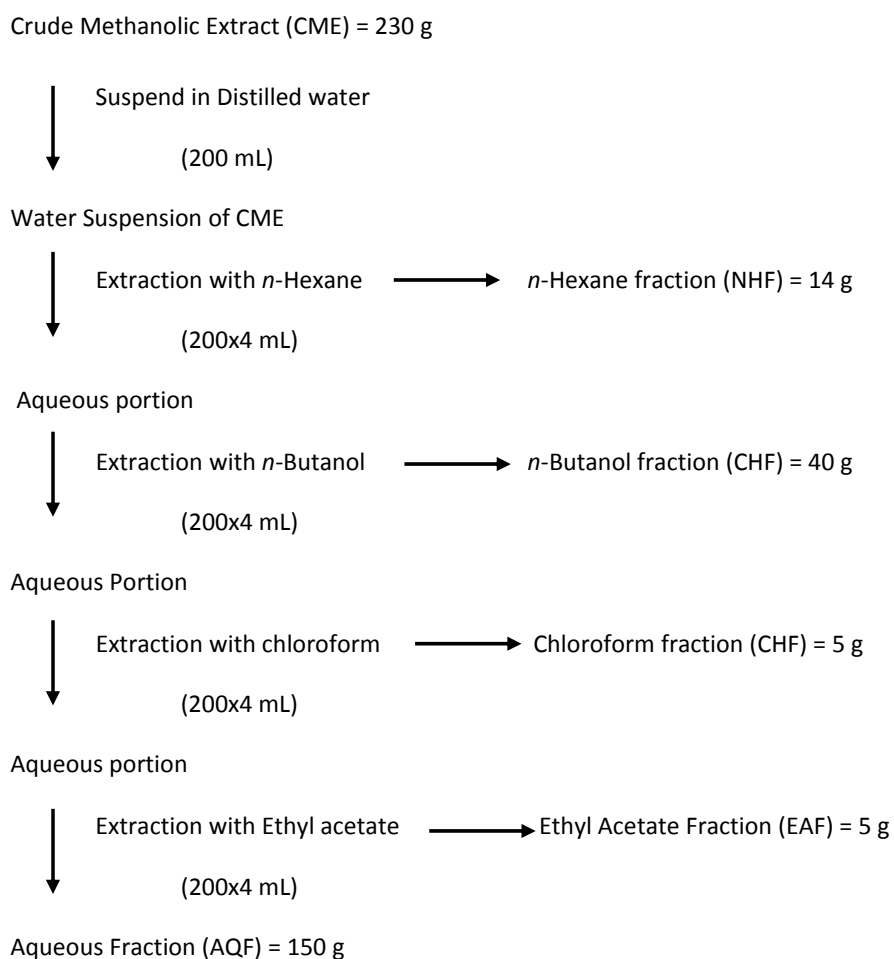


Figure 4. Schematic diagram for fractionation of crude methanolic root extract (CME).

(0.35%), EAF (0.25%), CHF (0.10%) and NHF (0.01 %). It is well documented that the flavonoids show antioxidant activity and have considerable effects on human health and nutrition (39, 40).

#### The phenolic contents

The total phenolic contents of the CME and its fractions are shown in Figure 3. Among CME and its fractions, NBF fraction has highest phenolic content (20.49%), followed by CME fraction (19.08%), AQF (16.18%), EAF (15.81%), CHF (12.01%) and NHF (4.03%). The relationships between phenolic content of medicinal plants and antioxidant activity is well documented (21, 41).

#### Acknowledgment

The authors are thankful to the Higher Education Commission of Pakistan for financial support. We thank Dr. Rizwana Aleem Qureshi, Quaid-i-Azam University Islamabad for identifying the plant.

#### References

- (1) Ali MS, Ahmed S and Saleem M. Spirowallichione: A rearranged multiflorane from *Euphorbia wallichii* Hook F. (Euphorbiaceae). *Molecules* (2008) 13: 405-411.
- (2) Ali I, Naz R, Khan WN and Gul R. Biological screening of different root extracts of *Euphorbia wallichii*. *Pak. J. Bot.* (2009) 41: 1737-1741.
- (3) Smith-Kielland I, Dornish JM, Malteruel KE, Hvistendahl G, Romming C, Bockman OC, Kolsaker P, Stenstrom Y and Norel A. Cytotoxic triterpenoids from the leaves of *Euphorbia pulcherrima*. *Planta Med.* (1966) 62: 322-325.
- (4) Javidnia K, Miri R, Amirghofran Z and Jafari A and Amoozega Z. Cytotoxicity and antimicrobial assessment of *Euphorbia hebecarpa*. *Iranian J. Pharm. Res.* (2004) Suppl. 2: 75-75.
- (5) Singla AK and Pathak K. Phytoconstituents of *Euphorbia* species. *Fitoterapia* (1990) 61: 483-516.
- (6) Pan L, Yu KB, Peng SL, Zhou Y and Ding LS. Ent-3b,16-dihydroxyisopimar-7-ene-2,15- dione: a new tricyclic diterpenoid from the roots of *Euphorbia wallichii*. *Acta Crystallogr. E* (2006) 62: 01643-01644.
- (7) Pan L, Zhou P, Zhang XF, Peng S, Ding LS and Qiu SX. Skeleton-rearranged pentacyclic diterpenoids possessing a cyclobutane ring from *Euphorbia wallichii*. *Org. Lett.* (2006) 8: 2775-2778.
- (8) Wang H, Zhang X, Cai X, Ma Y and Luo X. Three new diterpenoids from *Euphorbia wallichii*. *Chinese J. Chem.* (2004) 22: 199-202.
- (9) Parry J, Su L, Luther M, Zhou KQ, Yurawecz MP, Whittaker P and Yu LL. Fatty acid composition and antioxidant properties of cold-pressed marionberry, boysenberry, red raspberry, and blueberry seed oils. *J. Agric. Food Chem.* (2005) 53: 566-573.
- (10) Kulisic T, Radonic A, Katalinic V and Milos M. Use of different methods for testing antioxidative activity of oregano essential oil. *Food Chem.* (2004) 85: 633-640.
- (11) Obeid HK, Allen MS, Bedgood DR, Prenzied PD, Robards K and Stockmann R. Bioactivity and analysis of biophenols recovered from olive mill waste. *J. Agric. Food Chem.* (2005) 53: 823-837.
- (12) Tian B and Hua Y. Concentration dependence of prooxidant and antioxidant effects of aloin and aloemodin on DNA. *Food Chem.* (2005) 91: 413-418.
- (13) Nawaz H, Akhter Z, Yameen S, Siddiqi HM, Mirza B and Rifat A. Synthesis and biological evaluation of some Schiff-bases esters of ferrocenyl aniline and simple aniline. *J. Organomet. Chem.* (2009) 694: 2198-2203.
- (14) Skehan P, Storeng R, Scudiero D, Monks A, McMahan J, Vistica D, Warren JT, Bokesch H, Kenny S and Boyd MR. New colorimetric cytotoxicity assay for anticancer-drug screening. *J. Natl. Cancer Inst.* (1990) 82: 1107-1112.
- (15) Harborne JB. *Phytochemical Methods*. Academic Press, London (1993) 89-131.
- (16) Sofowara A. *Medicinal Plants and Traditional Medicine in Africa*. Spectrum Books Ltd., Ibadan (1993) 289.
- (17) Evans WC. *Trease and Evans' Pharmacognosy*. 15<sup>th</sup> ed., Saunders Publishers, London (2002) 42-393.
- (18) Edeoga OH, Okwu ED and Mbaebie OB. Phytochemical constituents of some Nigerian medicinal plants. *Afr. J. Biotechnol.* (2005) 7: 685-688.
- (19) Parekh J, Chanda V and Sume. *In-vitro* antimicrobial activity and phytochemical analysis of some Indian medicinal plants. *Turk. J. Biol.* (2007) 31: 53-58.
- (20) Chang C, Yang M, Wen H and Chern J. Estimation of total flavonoid content in propolis by two complementary colorimetric methods. *J. Food Drug Anal.* (2002) 10: 178-182.22
- (21) Velioglu YS, Mazza G, Gao L and Oomah BD. Antioxidant activity and total phenolics in selected fruits, vegetables, and grain products. *J. Agric. Food Chem.* (1998) 46: 4113-4117.
- (22) Yu LL. Free radical scavenging properties of conjugated linoleic acids. *J. Agric. Food Chem.* (2001) 49: 3452-3456.
- (23) Huang DJ, Ou BX and Prior RL. The chemistry behind antioxidant capacity assays. *J. Agric. Food Chem.* (2005) 53: 1841-1856.
- (24) Prior RL, Wu X and Schaich K. Standardized methods for the determination of antioxidant capacity and phenolics in foods and dietary supplements. *J. Agric. Food Chem.* (2005) 53: 4290-4302.
- (25) Zhou KQ, Yin JJ and Yu LL. Phenolic acid, tocopherol and carotenoid compositions, and antioxidant functions



- of hard red winter wheat bran. *J. Agr. Food Chem.* (2005) 53: 3916-3922.
- (26) Arrigoni O and Tullio MCD. Ascorbic acid: much more than just an antioxidant. *Biochim. Biophys. Acta* (2002) 1569: 1-9.
- (27) Santos-Buelga C and Scalbert A. Proanthocyanidins and tannin like compounds-nature, occurrence dietary intake and effects on nutrition and health. *J. Agric. Food Chem.* (2000) 80: 1094-1117.
- (28) Frank H, Thiel D and MacLoad J. Mass spectrometric detection of cross-linked fatty acids formed during radical induced lesion of lipid membranes. *Biochem. J.* (1989) 260: 873-878.
- (29) Breen AP and Murphy JA. Reactions of oxyl radicals with DNA Free Radicals. *Free Radical Bio. Med.* (1995) 18: 1033-1077.
- (30) Dean RT, Fu S, Stocker R and Davies MJ. Biochemistry and pathology of radical-mediated protein oxidation. *Biochem. J.* (1997) 324: 1-18.
- (31) Ames BN. Dietary carcinogens and anticarcinogens. Oxygen radicals and degenerative diseases. *Science* (1983) 221: 1256-1264.
- (32) Cerruti PA. Oxy-radicals and cancer. *Lancet* (1984) 344: 862-863.
- (33) Von-Sonntag C. *The Chemical Basis of Radiation Biology*. Taylor & Francis, New York.
- (34) Newman DJ, Cragg GM and Snader KM. Natural products as sources of new drugs over the period 1981-2002. *J. Nat. Prod.* (2003) 66: 1022-1037.
- (35) Kucuk O. New opportunities in chemoprevention research. *Cancer Invest.* (2002) 20: 237-245.
- (36) Balunas MJ and Kinghorn AD. Drug discovery from medicinal plants. *Life Sci.* (2005) 78: 431-441.
- (37) Lee CC and Houghton P. Cytotoxicity of plants from Malaysia and Thailand used traditionally to treat cancer. *J. Ethnopharmacol.* (2005) 100: 237-243.
- (38) Khan NS, Ahmad A and Hadi SM. Anti-oxidant, pro-oxidant properties of tannic acid and its binding to DNA. *Chem-Biol. Interac.* (2000) 125: 177-189.
- (39) Younes M. Inhibitory action of some flavonoids on enhanced spontaneous lipid peroxidation following glutathione depletion. *Planta Med.* (1981) 43: 240-245.
- (40) Das NP and Pereira TA. Effects of flavonoids on thermal autooxidation of Palm oil: structure- activity relationship. *J. Am. Oil Chem. Soc.* (1990) 67: 255-258.
- (41) Kahkonen MP, Hopia AI, Vuorela HJ, Rauha JP, Pihlaja K, Kujala TS and Heinonen M. Antioxidant activity of plant extracts containing phenolic compounds. *J. Agric. Food Chem.* (1999) 47: 3954-3962.

---

This article is available online at <http://www.ijpr.ir>

---

**Search full text articles?  
Visit <http://www.ijpr.ir>**